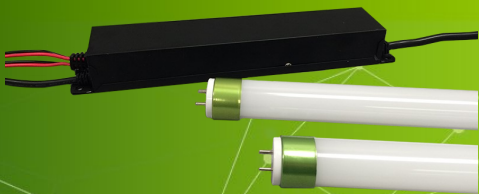
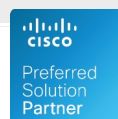


2' DIMMABLE LED RETROFIT KIT



The AccelTex Solutions EnergyLynk LED Retrofit Kits are used to replace existing fluorescent ballasts and bulbs and are fully compatible for use with the AccelTex Solutions Dimmable Wireless Light/Load Controller. The retrofit kit includes a dimmable ballast and 2 LED light bulbs. This kit is designed to provide smooth dimming and no-flicker light operation.

	ATS-RK-2ft-C-4000K-30W	ATS-RK-2ft-F-4000K-30W	ATS-RK-2ft-C-5000K-30W	ATS-RK-2ft-F-5000K-30W
LED Bulb Specifications				
Input Voltage	100-277 VAC			
Power Factor	> 0.95			
Wattage	10 W			
Output Lumens	1251 lm	1118 lm	1334 lm	1200 lm
Efficacy	111 lm/W	112 lm/W	115 lm/W	103 lm/W
Color Rendering Index (CRI)	≥ 82			
Beam Angle	120°			
Color Temperature	4000K		5000K	
Length	2'			
Lens	Clear	Frosted	Clear	Frosted
Base	G-13 medium bi-pin			
Lifespan	> 60,000 hours			
Installation Environment	Indoor			
Operating Temperature	-4 to 131°F (-20 to 55°C)			
Dimmable Driver Specifications				
Input Voltage	100-277 VAC			
Output Voltage	20-40 VDC			
Efficiency	≥ 85%			
Dimming Protocol	0-10 V			
Total Harmonic Distortion (THD)	< 20%			
Power Factor	≥ 0.95			
Wattage	30 W			
Output	≥ 10 W per channel			
Output Lumens	3000 lm			
Output Channels	3			
LED Tube Quantity	1, 2 or 3			
Dimensions	9.4" L x 1.7" W x 1.1" H (240mm L x 42.4mm W x 29mm H)			
Input Lead Length	12" (305mm)			
Output Lead Length	23" (585mm)			
Lifespan	> 60,000 hours			
Environment	Indoor			
Operating Temperature	-4 to 131°F (-20 to 55°C)			



4' DIMMABLE LED RETROFIT KIT



The AccelTex Solutions EnergyLynk LED Retrofit Kits are used to replace existing fluorescent ballasts and bulbs and are fully compatible for use with the AccelTex Solutions Dimmable Wireless Light/Load Controller. The retrofit kit includes a dimmable ballast and 2 LED light bulbs. This kit is designed to provide smooth dimming and no-flicker light operation.

	ATS-RK-4ft-C-4000K-36W	ATS-RK-4ft-F-4000K-36W	ATS-RK-4ft-C-5000K-36W	ATS-RK-4ft-F-5000K-36W
LED Bulb Specifications				
Input Voltage	100-277 VAC			
Power Factor	> 0.90			
Wattage	15 W			
Output Lumens	2144 lm	1892 lm	2140 lm	1928 lm
Efficacy	119 lm/W	105 lm/W	119 lm/W	106 lm/W
Color Rendering Index (CRI)	≥ 82			
Beam Angle	120°			
Color Temperature	4000K		5000K	
Length	4'			
Lens	Clear	Frosted	Clear	Frosted
Base	G-13 medium bi-pin			
Lifespan	> 60,000 hours			
Installation Environment	Indoor			
Operating Temperature	-4 to 131°F (-20 to 55°C)			
Dimmable Driver Specifications				
Input Voltage	100-277 VAC			
Output Voltage	20-40 VDC			
Efficiency	≥ 85%			
Dimming Protocol	0-10 V			
Total Harmonic Distortion (THD)	< 20%			
Power Factor	≥ 0.95			
Wattage	36 W			
Output	≥ 15 W per channel			
Output Lumens	4200 lm			
Output Channels	2			
LED Tube Quantity	1 or 2			
Dimensions	9.4" L x 1.7" W x 1.1" H (240mm L x 42.4mm W x 29mm H)			
Input Lead Length	12" (305mm)			
Output Lead Length	23" (585mm)			
Lifespan	> 60,000 hours			
Environment	Indoor			
Operating Temperature	-4 to 131°F (-20 to 55°C)			

